

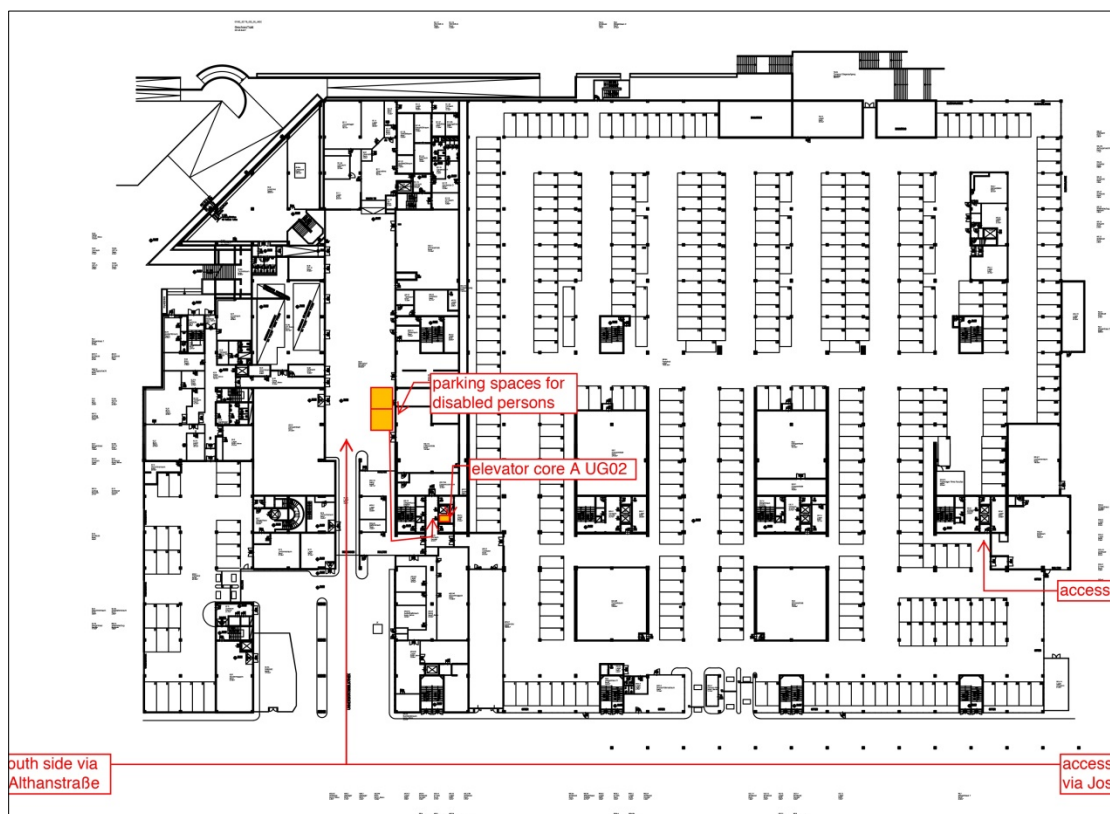
# Barrier-free access to the buildings of the Academy of Fine Arts

## Main Building, Augasse 2-6, 1090 Vienna

### Access by car:

- Access on the north end of the building from Josef-Holaubek-Platz to the car park to core A, follow the signpost for approx. 100 m, or
- Access on the south side of the building from Althanstraße, follow the upper ramp and turn left at the first turn (close to parking Pharmazie).

### Augasse Basement UG02:



### Wheelchair access information:

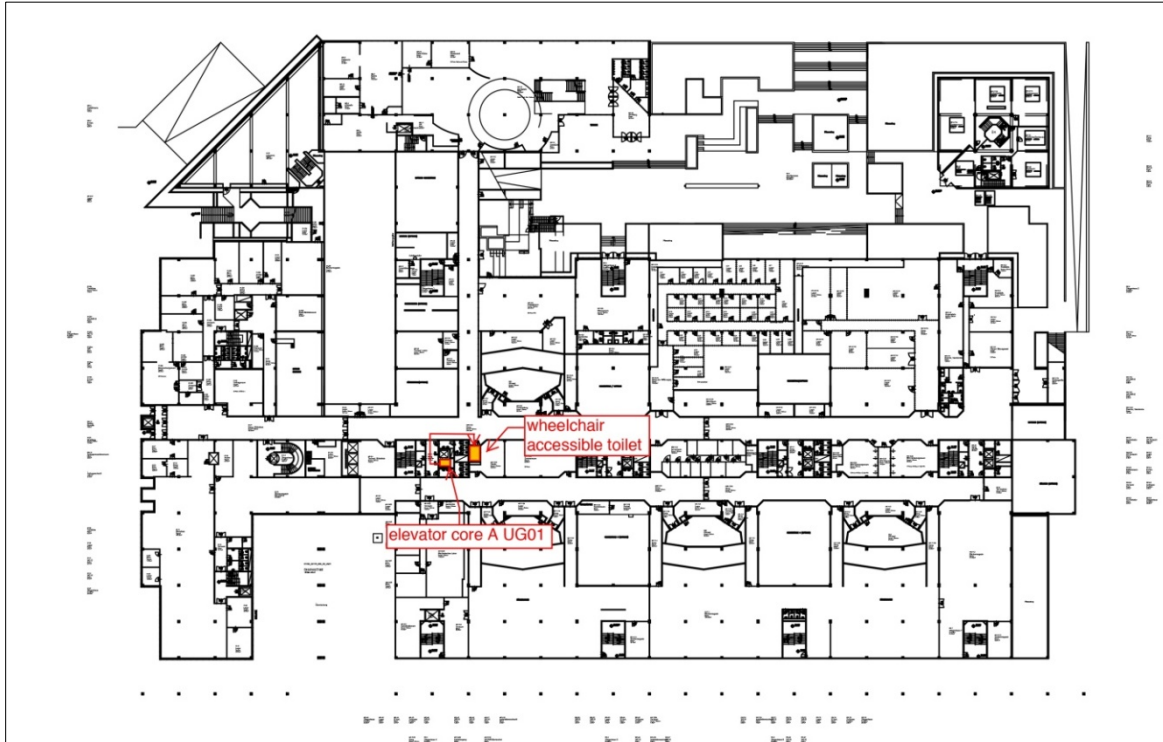
Access with wheelchair to the main building in Augasse is possible through the car park:

- Parking spaces for disabled persons are located in core A in the 2<sup>nd</sup> basement UG02 close to the loading area. Take the big lift in core A to any floor.
- Access on the north end of the building is next to the bus stop of bus line 35A at Josef-Holaubek-Platz. There is a door on the chain-link fence that allows entrance to the car park and to any of the cores A to D via lift. Access to any floor is possible. If you need assistance because of the narrow entrance to the core D lift, please use the bell to call the porter.

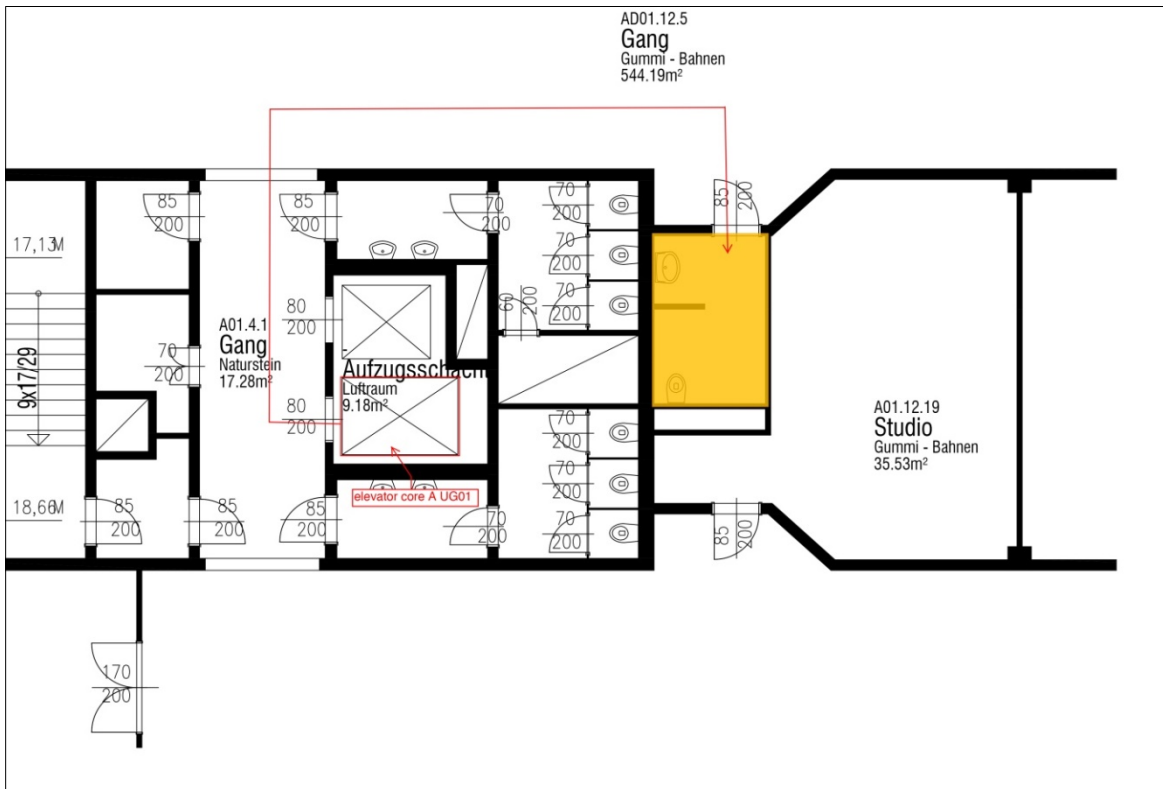
**Toilet accessible to wheelchair users:**

A toilet accessible to wheelchair users is located in the 1<sup>st</sup> basement UG01 in core A. Access is possible with a euro-key.

**Augasse Basement UG01:**



**Toilet accessible to wheelchair users UG01:**



### **Studio Building, Lehárgasse 8, 1060 Vienna**

At the main entrance door there is a bell. The porter is available to assist during the opening hours. The side entrance to Prospekthof is at ground level, but not all levels are accessible. A toilet accessible to wheelchair users is in the building.

### **Sculpture Studios, Böcklinstraße 1 / Kurzbauergasse 9, 1020 Vienna**

Wheelchair access is possible through the entrance in Rustenschacherallee and the courtyard. A ramp and a bell to call the porter during the opening hours are located at the back entrance of the building.

A toilet accessible to wheelchair users is in the building.

### **Institute Building, Karl-Schweighofer-Gasse 3, 1070 Vienna**

The entrance to the courtyard is accessible to wheelchair users and leads to the lift. The entrance to the kindergarten is also accessible to wheelchair users. A toilet accessible to wheelchair users is on every floor.

### **Studio Building for Painting and Graphic Arts, Engerthstraße 119, 1200 Vienna**

The entrance is on the ground level, but there is an approx. 8 cm high step. The building is open 24h and the porter is available at any time. The first floor is not accessible to wheelchair users.

A toilet accessible to wheelchair users is located on the ground floor.